



# WHEN GOOD DESIGN AND GOOD PAINT WORK TOGETHER

## CUSTOMER CASE/

Andresen Towers  
DENMARK

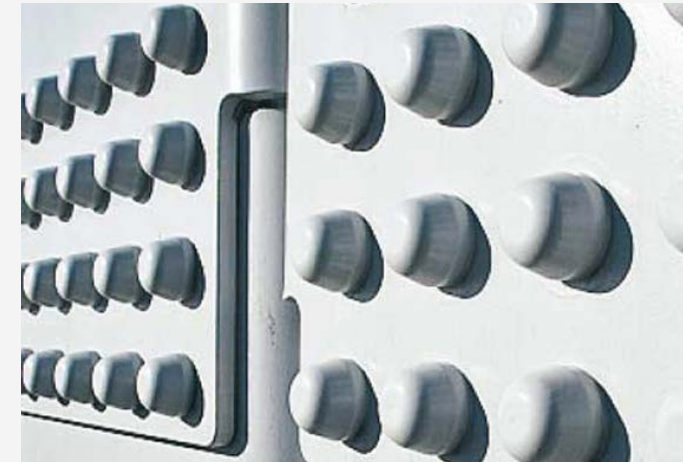
The Danish company **Andresen Towers** has developed a unique concept for wind turbine towers, which simplifies transport and makes it possible to haul high towers everywhere – even on the narrowest roads and the most intricate roundabouts. This concept is nowadays continued by Blue Nordic. The Teknos product **TEKNODUR COMBI 3560** met the high demands made for the surface paint.



[teknos.com](https://www.teknos.com)

// WHEN WE PRODUCE MOST, WE HAVE A PRODUCTION OF ABOUT THREE AND A HALF TOWERS PER WEEK.

## CUSTOMER CASE



**Instead** of welding rolled shells for large, bulky, cylindrical tower elements that are to be transported at full length on large, heavy-duty semi-trailer flatbed trucks, Andresen Towers started producing many different long, bent steel segments that can be transported to the end destination cheaper and faster on normal platform trucks. The steel segments allow hub heights of more than 100 meters, because they are bolted together into towers directly on site.

The fresh idea quickly attracted interest in the wind turbine industry and resulted in a tremendous demand. In order to be able to >

A background image showing three wind turbines in a field of rolling hills under a hazy, orange-tinted sky, suggesting a sunset or sunrise. The turbines are dark silhouettes against the lighter background.

“ SUCH A HIGH PRODUCTION WOULD SIMPLY HAVE BEEN IMPOSSIBLE WITH TRADITIONAL PAINT

produce quickly, it was essential to find a paint system that was fast hardening.

“When we produce most, we have a production of about three and a half towers per week. Such a high production would simply have been impossible with traditional paint. If we had used traditional paint, the steel segments would have had to wait for hardening for up to seven days, and that would have been expensive, demanded immense space and would not have suited the flow,” said Andresen Towers Quality Manager **Peter Sylow Madsen** at the beginning of the collaboration.

#### **Cooperation with Teknos**

Andresen Towers needed an innovative paint supplier that could offer a fast hardening, stable paint – a paint supplier that could think out of the box and that was in a position to actively participate in phasing in the painting and hardening process, so that the lead times fit with the processes in the other production facilities. This is where Teknos came into the picture, with their product and their product **TEKNODUR COMBI 3560** as well as their technical and practical assistance. “At Andresen Towers we are very much

in favor of innovation. And at Teknos, we met this same approach. Ever since the beginning of our cooperation with Teknos, we have been enthusiastic about their practical approach, their theoretical knowledge, high level of service and flexibility,” said Peter Sylow Madsen.

#### **Environmental benefits**

The fast-hardening Teknos paint was also an environmentally friendly choice for Andresen Towers, thanks to its high percentage of dry matter.

“We deliver to a green segment, so

the environmental benefit of TEKNODUR COMBI 3560 is important,” said Peter Sylow Madsen.

“The project as a whole would not have been the same without their paint.” ■



# LEARN MORE ABOUT TEKNOS SOLUTIONS

+358 9 506 091  
sales@tekno.com



tekno.com