

Teknos A/S
 Industrivej 19
 6580 Vamdrup
 Denmark

Att.: Else Toftegaard

Eurofins Product Testing
 Smedeskovvej 38
 DK-8464 Galten
 Denmark

Tel. +45 70 22 42 76
 Fax +45 70 22 42 75
 ProductTesting-GA
 @eurofins.dk
 www.eurofins.dk

Date
 December 01, 2016
Your ref.
 TEKNOCOAT AQUA 1879-07
Our ref.
 392-2016-00433002/TKI6

Analytical report

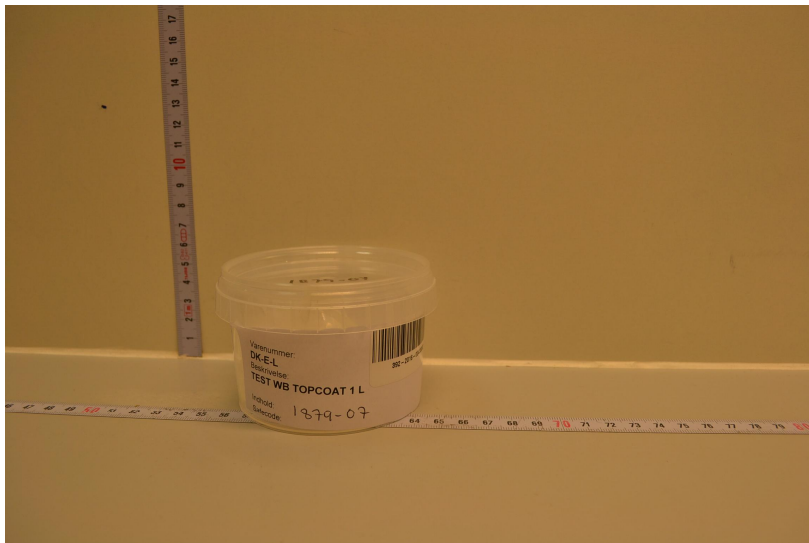
Sample material

Sample identification	TEST WB TOPCOAT 1879-07
Receipt of samples	November 23, 2016
Analytical period	November 28 – November 30, 2016

Applied methods

EN 71-3:2013+A1:2014

Picture of sample



Results

Please see enclosure with detailed results.

Conclusion

The sample **complies** with the requirements in EN 71-3

Eurofins Product Testing A/S

Ditte F. Bonde

Ditte F. Bonde
 MSc. Medicinal Chemistry

Eurofins Product Testing A/S

Brian Jensen

Brian Jensen
 MSc. Chemistry

Eurofins CPT GmbH · Am Neuländer Gewerbepark 4 · D-21079 Hamburg

Eurofins Product Testing A/S
attn. Reports
Smedeskovvej 38
8464 Galten
DÄNEMARKProductTesting-HH@eurofins.com
www.product-testing.eurofins.com**Person in charge** Mrs J. Wissel
Client support Mrs M. Lohmann

Report date 30.11.2016

Page 1/1

Analytical report AR-16-JR-021829-01**Sample Code 799-2016-00092920**

Reference	392-2016-00433002TEST WB TOPCOAT 1879-07
Client sample code	392-2016-00433002
Purchase order code	EUDKGA00002262
Ordered by	Eurofins Product Testing A/S
Submitted by	Eurofins Product Testing A/S
Carrier	TNT
Reception date	25.11.2016
Start/end of analyses	28.11.2016 / 30.11.2016

TEST RESULTS**Physical-chemical Analysis****JR0EP EN 71 Part 3: Migration of certain 19 elements; Cr(III) and Cr(VI) not accredited (#)**

Method: EN 71-3:2013+A1:2014, PV 01362, ICP-MS

Safety of toys - Migration of certain elements

Complies with the requirements

(#) = Eurofins Consumer Product Testing (Hamburg) is accredited for this test.

Signature



Analytical Service Manager (Jana Wissel)

Appendix 1 to report no: AR-16-JR-021829-01

Sample no: 799-2016-00092920

JR0EP - EN 71-3:2013 + A1:2014 Safety of Toys - Migration of certain 19 elements

Limits of element migration from accessible parts of toy material
All figures quoted as mg soluble element per kg material

Element	B	Al	Cr(III) Cr(VI)	Mn	Co	Ni	Cu	Zn	As	Se	Sr	Cd	Sn	Organic tin	Ba	Hg	Pb	Sb
Limits Category I (dry, brittle, powder like, pliable) mg/kg	1200	5625	37,5 0,02	1200	10,5	75	622,5	3750	3,8	37,5	4500	1,3	15000	0,9	1500	7,5	13,5	45
Limits Category II (liquid, sticky) mg/kg	300	1406	9,4 0,005	300	2,6	18,8	156	938	0,9	9,4	1125	0,3	3750	0,2	375	1,9	3,4	11,3
Limits Category III (scraped-off) mg/kg	15000	70000	460 0,2	15000	130	930	7700	46000	47	460	56000	17	180000	12	18750	94	160	560
Description of sample	Results of analysis																	
A 392-2016-00433002TEST WB TOPCOAT 1879-07 Cat I <input type="checkbox"/> Cat II <input type="checkbox"/> Cat III <input checked="" type="checkbox"/>	0,28	<0,25*	total Cr 0,03	<0,05*	<0,05*	<0,25*	<0,05*	<0,25*	<0,05*	<0,5*	<0,25*	<0,05*	<0,08*	<12	<0,25*	<0,05*	<0,05*	<0,25*

* Limit of quantification

Test results and evaluation relate to the tested items only.

Tested by: KbE

Date: 30.11.2016

Appendix 1 to report no: AR-16-JR-021829-01

Sample no: 799-2016-00092920

Analytical details (EN 71-3 clause 10)

10f Technique used: Inductively coupled plasma

10h Notes for individual sample portions -
the following notes apply to the samples indicated and referenced above:

	Applicable samples:
Between 10 and 100mg taken:	
Sample/volume ratio exceeds 1:50:	
Base material included:	
Samples sieved:	
2M HCl added:	
6M HCl added:	
n-heptane used:	
Samples centrifuged:	
Specimens adjusted to 0.3M:	
Less than 10mg present:	
Others:	