

Teknos A/S  
 Industrivej 19  
 DK-6580 Vamdrup

ATT: Else Toftegaard

**Eurofins Product Testing**  
 Smedeskovvej 38  
 DK-8464 Galten  
 Denmark

Tel. +45 70 22 42 76  
 Fax +45 70 22 42 75  
 ProductTesting-GA  
 @eurofins.dk  
 www.eurofins.dk

**Date**  
 August 18<sup>th</sup>, 2015

**Your ref.**  
 Prøve 2

**Our ref.**  
 392-2015-00229902/BJ1

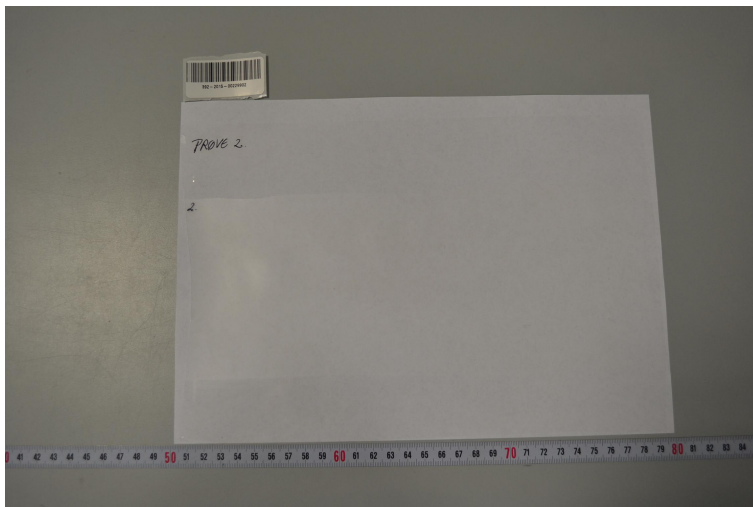
## Analytical report

### Sample material

Sample identification	TEKNOCOAT AQUA 1878-23 (BASE 3)
Receipt of samples	July 28, 2015
Analytical period	August 5 – August 17, 2015

**Applied methods**  
 EN 71-3:2014-12

### Picture of sample



### Results

Please see enclosure with detailed results.

### Conclusion

The sample **complies** with the requirements in EN 71-3

Eurofins Product Testing A/S



Brian Jensen  
 MSc. Chemistry

Eurofins CPT GmbH · Am Neuländer Gewerbepark 4 · D-21079 Hamburg

Eurofins Product Testing A/S  
attn. Reports  
Smedeskovvej 38  
8464 Galten  
DÄNEMARKProductTesting-HH@eurofins.com  
www.product-testing.eurofins.com**Person in charge** Mrs C. Braun**Client support** Ms B. GallhofReport date 07.08.2015  
Page 1/1**Analytical report AR-15-JR-012880-01****Sample Code 799-2015-00059202**

<b>Reference</b>	TEKNOCOAT AQUA 1878-23 (BASE 3)
<b>Client sample code</b>	392-2015-00229902
<b>Purchase order code</b>	EUDKGA00000746
<b>Ordered by</b>	Eurofins Product Testing A/S
<b>Submitted by</b>	Eurofins Product Testing A/S
<b>Sender</b>	TNT
<b>Reception date time</b>	31.07.2015
<b>Start/end of analyses</b>	05.08.2015 / 07.08.2015

**TEST RESULTS****Physical-chemical Analysis**

**JR0EP EN 71 Part 3: Migration of certain 19 elements (#)**  
Method: EN 71-3:2013+A1:2014, PV 01362, Safety of Toys - Migration of certain Elements  
Migration of certain elements Complies with the requirements

(#) = Eurofins Consumer Product Testing (Hamburg) is accredited for this test.

Signature



Denis Campbell, Sales Manager Toy Testing

Appendix 1 to report no: AR-15-JR-012880-01

Sample no: 799-2015-00059202

**JR0EP - DIN EN 71-3:2014-12 Safety of Toys - Migration of certain 19 elements**

 Limits of element migration from accessible parts of toy material  
 All figures quoted as mg soluble element per kg material

Element	B	Al	Cr(III) Cr(VI)	Mn	Co	Ni	Cu	Zn	As	Se	Sr	Cd	Sn	Organic tin	Ba	Hg	Pb	Sb
Limits Category I (dry, brittle, powder like, pliable) mg/kg	1200	5625	37,5 0,02	1200	10,5	75	622,5	3750	3,8	37,5	4500	1,3	15000	0,9	1500	7,5	13,5	45
Limits Category II (liquid, sticky) mg/kg	300	1406	9,4 0,005	300	2,6	18,8	156	938	0,9	9,4	1125	0,3	3750	0,2	375	1,9	3,4	11,3
Limits Category III (scraped-off) mg/kg	15000	70000	460 0,2	15000	130	930	7700	46000	47	460	56000	17	180000	12	18750	94	160	560
Description of sample	Results of analysis																	
A Teknocoat Aqua 1878-23 Base 3 Cat I <input type="checkbox"/> Cat II <input type="checkbox"/> Cat III <input checked="" type="checkbox"/>	0,05	<0,25*	total Cr <0,02*	<0,05*	<0,05*	<0,25*	<0,05*	<0,25*	<0,05*	<0,5*	<0,25*	<0,05*	<0,08*	<12	0,28	<0,05*	<0,05*	<0,25*

\* Limit of quantification

Test results and evaluation relate to the tested items only.

Limits for Germany: Lead (Pb): 90mg/kg

Tested by: CB

Date: 2015-08-07

Appendix 1 to report no: AR-15-JR-012880-01

Sample no: 799-2015-00059202

**Analytical details (EN 71-3 clause 10)**

10f Technique used: Inductively coupled plasma

10h Notes for individual sample portions -  
the following notes apply to the samples indicated and referenced above:

	Applicable samples:
Between 10 and 100mg taken:	
Sample/volume ratio exceeds 1:50:	
Base material included:	
Samples sieved:	
2M HCl added:	
6M HCl added:	
n-heptane used:	
Samples centrifuged:	
Specimens adjusted to 0.3M:	
Less than 10mg present:	
Others:	