

PAINING OUTDOORS

FACADES / ROOFS



GUIDEBOOK **BY TEKNOS**

LET'S PAINT!

BEAUTY We all want our homes to look amazing, with colours that fit the surroundings. Get the look you want with Teknos Exterior colours collection.

PROTECTION AND DURABILITY First and foremost paint must protect and prolong the life cycle of surfaces. Paint protects the surfaces from moisture, dirt and other impurities. Our paints are made to withstand the harsh, varying Nordic conditions.

CLEANABILITY When surfaces have a protective paint film, it is easier to keep them clean. Exterior facades attract dust and pollen that in turn, attract microbes that feed on these particles and can cause damage. It is important therefore, to keep outdoor surfaces clean.

TABLE OF CONTENTS

BEFORE PAINTING	4
PAINT GUIDE	6
HOW MUCH PAINT?	7
COLOUR GUIDE	8
CHECK LIST	9
HOW TO PAINT?	10
WOODEN FACADES	
Fine sawn wood	12
Log and planed panels - Opaque finish	14
Log and planed panels - Translucent finish	16
RENDERED FACADES	
Concrete, masonry, burnt brick	18
ROOFS	
Sheet metal roofs	20
Tile roofs	24
AFTER PAINTING	26

BEFORE PAINTING

1. COLOURS, PAINTS AND TOOLS

TAKE BEFORE PHOTOS Seeing the change from before to after painting is exciting, so take photos before you start!

MEASURE THE SURFACE To calculate how much paint you need, measure the surface area.

PICK A COLOUR So many colours to choose from! See page 8 for our colour guide.

BUY THE PAINT Select the paint to match the purpose. Paint guide on page 6.

GET THE RIGHT TOOLS High quality painting tools will help you achieve a high quality finish. For waterbased paints use synthetic brushes as water causes natural bristles to splay, making painting harder. There are different types of brushes available e.g. for wood stains.

2. PREPARE THE SURFACE

CLEAN THE SURFACES Paint does not adhere to dirty surfaces, so clean them before painting. Brush off dirt and dust and use biodegradable RENSA® detergents for dirty and moulded surfaces. Avoid excessive use of water especially on wooden surfaces. Let dry properly before starting to paint.

REMOVE ALL LOOSE PAINT If it is loose, it will not become solid again by painting over it. Use a wirebrush for example, to remove the flaking paint.

WHEN MAINTENANCE PAINTING Some paints require the same type paint to top coat with. Waterborne acrylate paints are suitable both for old alkyd or acrylate paints as long as the prework is done thoroughly. If in doubt, contact your local Teknos customer service or distributor for advice.

CONDITION Check the condition of the surface to be painted. Replace wooden parts if already in bad shape. Greyed wood needs to be sanded solid. If sheet metal on the roof has corroded through it needs to be replaced, no paint will fix it.

3. ALMOST THERE...

COVER the areas you don't wish to paint, e.g. terraces.

PLAN PROPERLY Paint from top to bottom, larger areas first then moving on to windows and doors and smaller details.

ENSURE SAFETY Rent a boom lift or proper scaffolding to reach the higher parts. Ladders are unstable and dangerous.

WEATHER A warm +10-20 C, cloudy day without the threat of rain would be ideal. Check the weather forecasts beforehand.

DRY Always make sure that the surface is completely dry before painting.

STIR the paint properly so it is fully mixed.



CLEAN BEFORE PAINTING

RENSA® FACADE is an efficient biodegradable detergent for washing external surfaces of buildings and pre-treating surfaces before painting. It can be used on all surfaces which can withstand cleaning with water. RENSA FACADE removes dirt, mould, algae growth and other impurities which weaken the adhesion of the paint. The detergent does not harm garden plants, but it is best to avoid unnecessary splashing. The most sensitive plants can be covered or wetted with water before treatment.

1. ____ Brush off dirt and dust.
2. ____ Wet porous surfaces e.g. untreated wood with water before applying the detergent.
3. ____ Apply RENSA® FAÇADE by brush or with garden sprayer from the bottom up.
4. ____ Leave on for about 20 minutes. Enhance the effect by brushing.
5. ____ Rinse surfaces from top to bottom.
6. ____ Let dry properly before painting.

RENSA® product series includes detergents for all surfaces. Check the table from page 6.

CAN HOUSES BE WASHED WITH A PRESSURE WASHER?

If you use the pressure washer from a distance and with the lowest amount of pressure, this is fine. Avoid spraying water into the structures.



SAVE IT FOR A RAINY DAY

Use rainy days for choosing the colour, shopping for the paint, getting all the tools. You don't want to miss the perfect time for painting by queueing in shops.

	SUBSTRATE	FINISH	GLOSS	RECOMMENDED TOP COAT	PAGE
WOODEN FACADES	Fine sawn wood	Opaque	Gloss	NORDICA® EKO House paint	12
			Semi-matt	NORDICA® CLASSIC House paint	12
			Full-matt	NORDICA® MATT House paint	12
		Translucent	Matt	WOODEX® PREMIUM Long-lasting wood stain	16
			-	WOODEX® AQUA CLASSIC Wood stain	17
			-	WOODEX® AQUA CLASSIC Wood stain	17
Log and planed wood	Opaque	Semi-matt	VISA® Opaque wood stain	14	
		Gloss	VISA® PREMIUM Special opaque wood stain	15	
		Matt	WOODEX® PREMIUM Long-lasting wood stain	16	
	Translucent	Matt	WOODEX® PREMIUM Long-lasting wood stain	16	
		-	WOODEX® AQUA CLASSIC Wood stain	17	
		-	WOODEX® AQUA CLASSIC Wood stain	17	
RENDERED FACADES	Concrete, plaster, mineral boards sand-lime brick	Opaque	Matt	SILOKSAN® ANTI-CARB Protective paint	19
			Full-matt	SILOKSAN® FACADE Silicone emulsion paint	18
		Opaque	Full-matt	SILOKSAN® FACADE Silicone emulsion paint	18
SHEET METAL FACADES	Zinc coated/galvanized sheet metal, steel, industrially coated sheet metal	Opaque	Semi-matt	KIRJO® AQUA 20 Semi-matt sheet-iron roof and facade paint	21
			Matt	KIRJO® AQUA Paint for sheet-iron roofs	20
ROOFS	Zinc coated/galvanized sheet metal, steel, industrially coated sheet metal	Opaque	Semi-matt	KIRJO® AQUA 20 Semi-matt sheet-iron roof and facade paint	21
			Semi-matt	FERREX® COMBI Water-borne anticorrosive paint	22
		Opaque	Full-matt	KIRJO® TILE Paint for tile roofs	24

The RENSA® product range is a comprehensive and clear range of washing and pretreatment solutions from which you can easily find the most suitable alternative for every surface and situation. The increasingly efficient detergents contain biodegradable surface-active substances, which also make them environmentally friendly.

DETERGENTS	USAGE
RENSA® FACADE	Outdoor surfaces. Removes dirt, mould, algae growth and other impurities.
RENSA® ROOF	Tile roofs and previously painted sheet metal surfaces
RENSA® STEEL	For pretreatment of galvanized sheet-metal and zinc-coated steel surfaces.
RENSA® ANTI-MOULD	Spray on and let it be. Disinfects the surface and gives a long-term protection. Can be used on surfaces that can withstand cleaning with water.



How much paint to get depends on the surface you are planning to work on. Is the surface rough or smooth? Does the paint need multiple layers to cover what's underneath? Here is how you calculate the needed amount.

Measure the area you wish to paint. Don't deduct windows or doors - this way you will have a little extra paint to finish the project.

$$\frac{\text{AREA TO BE PAINTED m}^2}{\text{Coverage m}^2/\text{l}} = \text{needed liters of paint}$$

Ensure you have enough for two layers of top coat, so remember to multiply your paint requirement by two.

The consumption depends on the surface roughness, colour and the painter. These all affect the amount needed.

Check the spreading rates from the product tables, paint cans or website.

COLOUR GUIDE

Find out if there are any restrictions for the use of some colours in your area.

LIGHT Always choose the colour for exterior outdoors in natural light. The light outside is much cooler than artificial lights in the house. Also the colour temperatures of daylight and seasons vary a lot and change the way we see the colours. Cooler greys turn easily bluish in natural light.

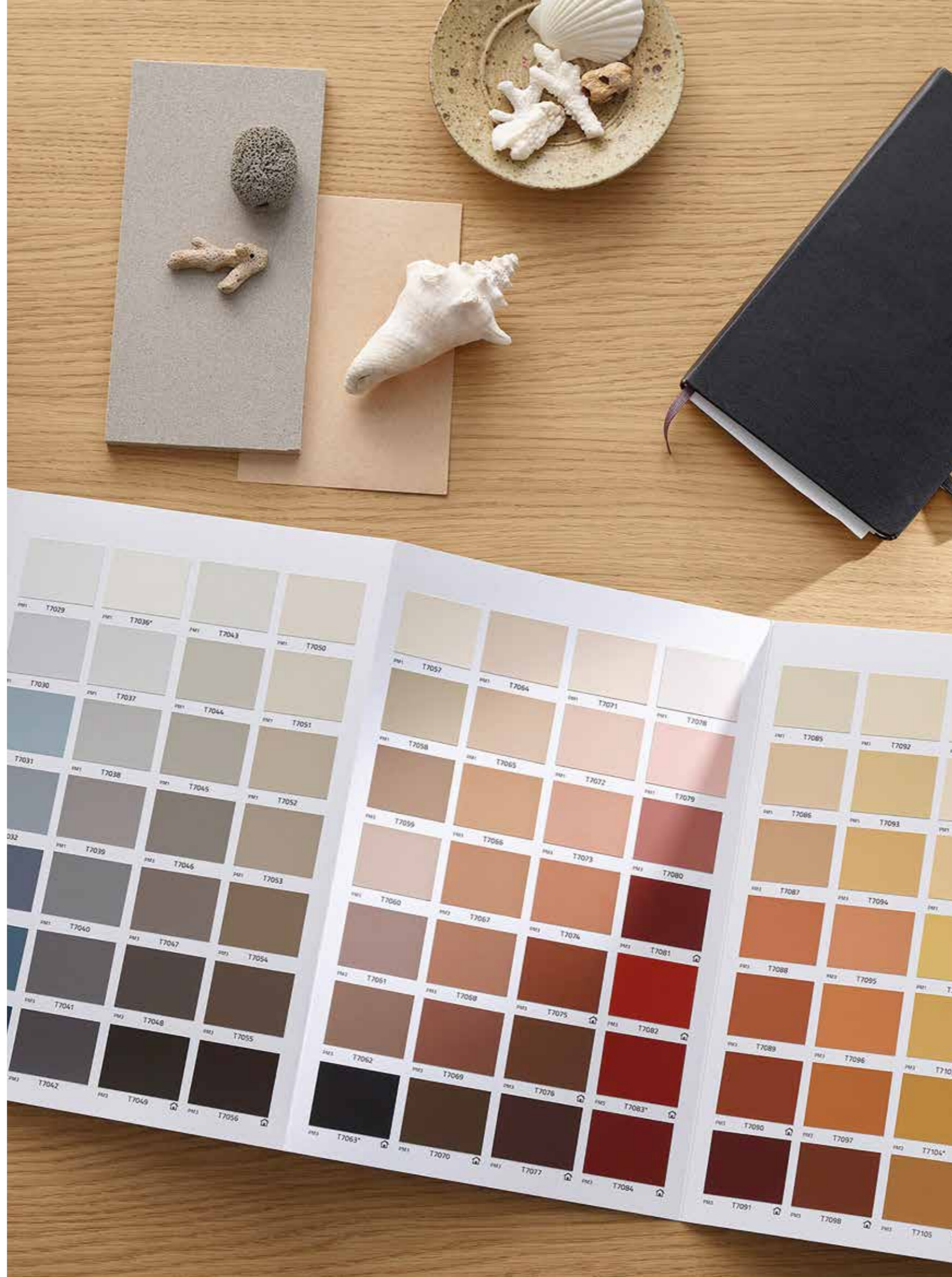
TEST PAINT Paint about 1m² area of the chosen colours to the corner of the building so you can see the colour in the surroundings. Paint twice to achieve full coverage and gloss. Paint different colours to different corners.

EXTERIOR COLOURS collection by Teknos has over 100 colours for wooden and mineral facades as well as roofs, doors and windows.

TRANSLUCENT COLOURS Keep the beautiful, natural patterns and grains of wood visible. Test paint on a loose panel to ensure colour. Type of wood, times of application and the used amount all affect the colour perception.

Get your colour cards from a local Teknos supplier. You will find the painted samples in your nearest Teknos retailer.

Find the colours in digital form at teknos.com/colours



CHECK LIST

PROTECTIVE GEAR

- Gloves
- Cap or scarf
- Long sleeved shirt and trousers
- Protective goggles

PREPARATIONS

- Protective paper or drop cloth
- Masking tape
- Sturdy ladders
- A boom lift for higher places

PRETREATMENT

- RENSA detergent for its intended purpose
- Wirebrush
- Waterhose
- Sturdy brush

PAINTING

- Primer for unpainted surfaces
- A suitable top coat for the project
- Mixing stick
- High quality tools
- Extension pole
- Paint tray or a small bucket
- Plastic bag (for storing tools and to cover the paint tray)

HOW TO PAINT

1. **WEAR PROTECTIVE GEAR** Shield yourself from paint splatters: safety goggles, long-sleeved top, long trousers, gloves, hat or a scarf.
2. **AVOID DIRECT SUNLIGHT** Paint in the shade. Direct sunlight will disrupt the forming of the paint film weakening its durability. Drying too fast may cause air bubbles in the paint film.
3. **PRIME** Bare, untreated surfaces need to be primed before topcoating. Rusted metal parts need to be wire-brushed as clean as possible.
4. **POUR PAINT** into a separate tray or a bucket to avoid dirt and dust getting to the opened paint can.
5. **USE ENOUGH PAINT** to get a protective paint film. Painting with a dry brush or the least amount of paint only leads to a bad result.
6. **RESERVE SUFFICIENT AMOUNT** of paint for one wall to avoid colour variations. Before the can is empty, add some from the next one and stir properly.
7. **START FROM THE HIGHER PARTS** moving down. This way you don't need to worry about having wrong colour paint drops on freshly painted surfaces.
8. **ADD A SECOND COAT** Leave the first coat to dry as instructed on your paint can before adding the second coat.
9. **TAKE A BREAK** once in a while. Store the tools in an air tight plastic bag.

WEATHER A warm +10-20 C, cloudy day without the threat of rain would be ideal.

PAINTING WITH FRIENDS AND FAMILY is fun and the job will be get done much faster. Remember this tip: Place the painters at different walls. We all have our different 'handwriting' even when it comes to painting. We use different amounts of paint which will show up over the years. The other end of the

house might be painted properly and last well, while the other end is painted with the least amount of paint possible and will be therefore be in bad shape earlier. At first the house looks good, but over the years the differences in paint film thickness become visible.

AIR HUMIDITY should be under 80% during painting and drying. Excessive air humidity can condense on the substrate and weaken the adhesion of the paint. It can also cause spotting on freshly painted surfaces.



WOODEN FACADES

FINE SAWN WOOD

New wood should be protected as soon as possible after it has been exposed to weather stress

NORDICA® HOUSE PAINTS

- Outstanding weather resistance
- Excellent colour retention
- High vapour permeability
- Long maintenance intervals
- Dirt-repelling surface
- Good hiding power
- Excellent for maintenance painting
- Tintable to Exterior colours
- Waterborne
- Primer: NORDICA PRIMER
- Swan Ecolabelled system available

Gloss	NORDICA EKO: Gloss, NORDICA CLASSIC: Semi-gloss, NORDICA MATT: Full-matt
Spreading rate	5-8 m ² /l
Colour	Base 1, white, base 3, base 5 red (T7083) can be tinted to Exterior colours. Also black as standard colour in NORDICA MATT.
Overcoatable	4 hours
Package sizes	0,45 l, 0,9 l, 2,7 l, 9 l, 18 l
Primer	NORDICA® PRIMER



Enhanced adhesion:
NORDICA PRIMER



Classic beauty:
NORDICA CLASSIC



Matt elegance:
NORDICA MATT



Unique & glossy:
NORDICA EKO

HOW TO SUCCEED

IMPREGNATE bare, unpainted wooden surfaces with WOODEX AQUA BASE PLUS wood preservative primer against wood discolouring fungi such as blue stains and moulds, and wood rotting fungi.

PRIME unpainted wood with NORDICA PRIMER for better adhesion and solid base for top coat.

TOPCOAT twice with the wanted gloss using a brush. Use good amount of paint with back and forth movement to really

get the paint to adhere properly. Make a finishing stroke towards the freshly painted area. Paint a few boards at a time from start to finish. Don't let the lead-end dry. This way you will end up with an even result which will last for years.



In most cases, new exterior cladding is already factory-primed, so only two topcoats is needed.

HOW TO MAINTENANCE PAINT WOODEN FACADES

1. ___ Replace any rotten wood and sand greyed wood to a solid state.
2. ___ Remove loose and poorly adhered old paint using e.g. a steel brush.
3. ___ Wash dirty surfaces with RENSA FACADE façade cleaner. Apply the detergent by a brush or with garden sprayer from bottom up. Thoroughly rinse the detergents by using a garden hose. Avoid excessive use of water.
4. ___ For bare wood, apply 1 x WOODEX AQUA BASE PLUS Wood preservative. Let dry for 24 hours.
5. ___ Prime unpainted areas 1 x with NORDICA PRIMER. To ease the upcoming work, use tinted primer for a better coverage when top coating. Let dry for a day.
6. ___ Touch up the primed areas with the top coat, let dry and then paint over the whole area. 1 time is enough if the colour is staying the same. If there are radical changes with the colour, 2-3 times is required. Only use thin coats of paint, a thick coat of paint is not long lasting.



BRUSH OR SPRAY?

To get the job done faster you can use a spray gun. However we recommend finishing the surface with a brush to get extra durability.

WOODEN FACADES

LOG AND PLANED PANEL – OPAQUE FINISH

VISA® OPAQUE WOOD STAINS

- No separate primer needed
- Specially suited for log and planed wood panels
- High water permeability
- Excellent for maintenance painting of old, faded, previously stained surfaces.
- Emphasises the grain pattern of the wood
- Easy to apply
- Elegant finish

VISA®

Opaque wood stain

Gloss	Semi-matt
Spreading rate	Sawn timber: 5 - 7 m ² /l. Planed timber: 8 - 10 m ² /l
Colour	Base 1, white and Base 3, can be tinted to Exterior colours
Overcoatable	2 hours
Package sizes	0,9 l, 2,7 l, 9 l, 18 l



OPAQUE FINISH with VISA offers great coverage, yet allowing the beautiful texture of the wood to stay visible.



VISA® PREMIUM

Special opaque wood stain

Gloss	Gloss
Spreading rate	Sawn timber: 6 - 8 m ² /l. Planed timber: 9 - 11 m ² /l
Colour	Base 1, white and Base 3, can be tinted to Exterior colours
Overcoatable	12 hours
Package sizes	0,9 l, 2,7 l, 9 l



EXCELLENT DURABILITY with longer maintenance intervals

HOW TO SUCCEED

IMPREGNATE bare, unpainted wooden surfaces with WOODDEX AQUA BASE PLUS wood preservative primer against wood discolouring fungi such as blue stains and moulds, and wood rotting fungi. Let dry to the next day

PRIME with 5-10% diluted VISA to ensure adhesion

TOPCOAT 1.x with undiluted VISA

WOODEN FACADES

LOG AND PLANED PANEL - TRANSLUCENT FINISH

TRANSLUCENT FINISH

Keep the beautiful, natural patterns and grains of wood visible with WOODEX® wood stains. Use wood stains as tinted to get protection from UV radiation. Choose the colour you want from our Translucent colours card. Use on log, planed and sawn panels.

WOODEX® PREMIUM

Long-lasting wood stain

- Maintenance intervals up to two to three times longer
- Fast drying
- Excellent colour retention
- Easy to apply
- Apply two coats for better durability

Gloss	Matt
Spreading rate	Sawn timber: 5 - 8 m ² /l. Planed timber: 8 - 12 m ² /l
Colour	To be tinted to Teknos' translucent colours
Overcoatable	2 hours
Package sizes	2,7 l, 9 l



HOW TO SUCCEED

TRANSLUCENT COLOURS The final colour is always influenced by the colour and porosity of the wood, number of coats and amount used. Test paint before choosing the final colour.

IMPREGNATE bare, unpainted wooden surfaces with WOODEX AQUA BASE PLUS wood preservative primer against wood discolouring fungi such as blue stains and moulds, and wood rotting fungi. Let dry to the next day.

APPLY 1-2 TOPCOATS depending on the colour intensity and the required result.

PAINT only 2-4 panels at a time from start to finish.

FINISH with a long stroke, letting the brush leave the surface like an airplane. This way you will end up to an even result.

MAINTENANCE If the old wood surface is dark, we do not recommend using a lighter shade of wood stain. If you want to make the surface light, paint it with opaque Visa.

STIR once in a while during painting to keep the colour stable

WOODEX® AQUA CLASSIC

Wood stain

- Excellent weather resistance
- Protects from UV when tinted
- Moisture and dirt resistant

Gloss	Absorbs into wood
Spreading rate	Sawn timber: 5 - 8 m ² /l. Planed timber: 8 - 12 m ² /l
Colour	To be tinted to Teknos' translucent colours
Overcoatable	16 hours
Package sizes	2,7 l, 9 l, 18 l



RENDERED FACADES

CONCRETE, MASONRY, BURNT BRICK

Permeable and water-repellent paints and coatings are the right solution for rendered surfaces. Protecting concrete from carbonation caused by carbon dioxide, lengthens the maintenance interval of structures. Painting can prevent excessive absorption of water into a concrete structure and protect it from moisture.

SILOKSAN® FACADE

Silicone emulsion paint

- Water-borne
- Very permeable
- Water repellent
- Full-matt finish
- Application by roller or spray

Gloss	Full-matt
Spreading rate	4-6 m ² /l
Colour	Base 1, white and Base 3, can be tinted to Exterior colours
Overcoatable	2-3 hours
Package sizes	2,7 l, 9 l, 18 l
Priming	SILOKSAN FACADE with an addition of SILOKSAN GEL (9 : 1)



Note! Dark colours from Exterior colours card tinted to SILOKSAN FACADE will appear a bit lighter due to the full-matt appearance. There are also some restrictions with the use of some colours in SILOKSAN FACADE.



SILOKSAN® ANTI-CARB

Protective paint

- Protects concrete against carbonation and deterioration
- High colour retention
- Matt finish

Gloss	Matt
Spreading rate	4-6 m ² /l
Colour	Base 1, white and Base 3, can be tinted to Exterior colours
Overcoatable	2 hours
Package sizes	9 l, 18 l
Priming	5-10% diluted SILOKSAN ANTI-CARB



HOW TO SUCCEED

Make sure that the surface is clean and completely dry.

REMOVE LAITANCE from new concrete by grinding or using RENSA® ETCHING etching liquid.

PRIME unpainted surfaces.

USE A LONG PILED ROLLER or a spray. To avoid seams apply the paint one wall at a time without interruptions.

USE SUFFICIENT AMOUNT of paint.

APPLY THE PAINT one wall at a time without interruption to avoid seams.

RESERVE ENOUGH PAINT mixed in one can to avoid possible colour differences. Always add more from the next can before the can is completely empty and mix thoroughly. This way you will avoid possible colour differences.

ROOFS

ZINC COATED/GALVANIZED SHEET-METAL AND STEEL SURFACES
INDUSTRIALLY PAINT COATED SHEET METAL

ROOFS ARE EXPOSED to various weather variations, air pollution and temperature fluctuations and therefore need to be carefully protected with paint. Regular maintenance and cleaning the roof will significantly prolong its life.

HOW TO SUCCEED

AVOID DIRECT SUNLIGHT Choose a cloudy, warm day without the threat of rain.

REMOVE all loose old paint coats and sand all rusted areas.

CLEAN Previously painted sheet metal surfaces are washed with RENZA® ROOF

Roof wash. Use RENZA® STEEL for pretreatment of zinc coated and galvanized sheet metal. Don't let the detergent dry on the surface. Rinse thoroughly.

PRIME areas cleaned from rust with FERREX® AQUA Anticorrosive paint

KIRJO® AQUA 20

Semi-matt sheet-iron roof and facade paint

- Anti-corrosive pigmentation
- No separate primer needed

Gloss	Semi-matt
Spreading rate	7-8 m ² /l
Colour	Base 1, white and Base 3, can be tinted to Exterior colours Premixed colours: T2504, T2509, T2514, T2515
Overcoatable	8 hours
Package sizes	Base 1 and 3: 0,9 l, 2,7 l, 9 l, 18 l T2515: 1 l, 3 l, 10 l, 20 l T2504; T2509; T2514: 10 l, 20 l



KIRJO® AQUA

Paint for sheet-metal roofs

- Anti-corrosive pigmentation
- Excellent weather resistance
- Good colour and gloss retention
- No need for a separate primer

Gloss	Matt
Spreading rate	7-8 m ² /l
Colour	Base 1, white and Base 3, can be tinted to Exterior colours. Premixed colourss: T2504, T2509, T2514, T2515
Overcoatable	8 hours
Package sizes	Base 1 and 3: 0,9 l, 2,7 l, 9 l, 18 l Premixed colours: 1 l, 3 l, 10 l, 20 l



Prime all rusted metal parts with FERREX® AQUA Anticorrosive paint before top coating with KIRJO AQUA



ROOFS

ZINC COATED/GALVANIZED SHEET-METAL AND STEEL SURFACES
INDUSTRIALLY PAINT COATED SHEET METAL

FERREX® COMBI

Water-borne anticorrosive paint

- Combination primer and topcoat
- Extra corrosion protection for higher demands
- All metal surfaces in interior and exterior
- One-component
- No need for a separate primer
- Tintable
- Amazing colour and gloss retention
- Great for maintenance painting

Gloss	Semi-matt
Spreading rate	7-9 m ² /l
Colour	White Base 1, base 3 and Premixed colours : NCS S 9000-N Black, NCS S 4500-N Grey.
Overcoatable	Approx. 4 hours
Package sizes	Bases 1 and 3: PM1 ja PM3 0,45 l, 0,9 l, 2,7 l, 9 l and 18 Premixed colours: 0,5 l, 1 l, 3 l, 10 l ja 20 l



INDUSTRIALLY PAINTED AND THROUGHOUT DYED CONCRETE AND CEMENT ROOF TILES, ROOFS

TILE is a long-lasting roofing material but, when it is exposed to weather stresses, its surface deteriorates, becomes dirty, and fades. Protecting roofing tiles using paint is an easy way to extend the life of the roof.

KIRJO® TILE

Paint for tile roofs

- Extends the service life of tile roofs
- No need for a separate primer
- Retains its colour
- Ready made factory shades

Gloss	Full-matt
Spreading rate	4-7 m ² /l
Colour	Premixed colours : T2504 Graphite grey, T2510 Brick red, T2513 Brown, T2515 Black
Overcoatable	8 hours
Package sizes	10 l, 20 l



HOW TO SUCCEED

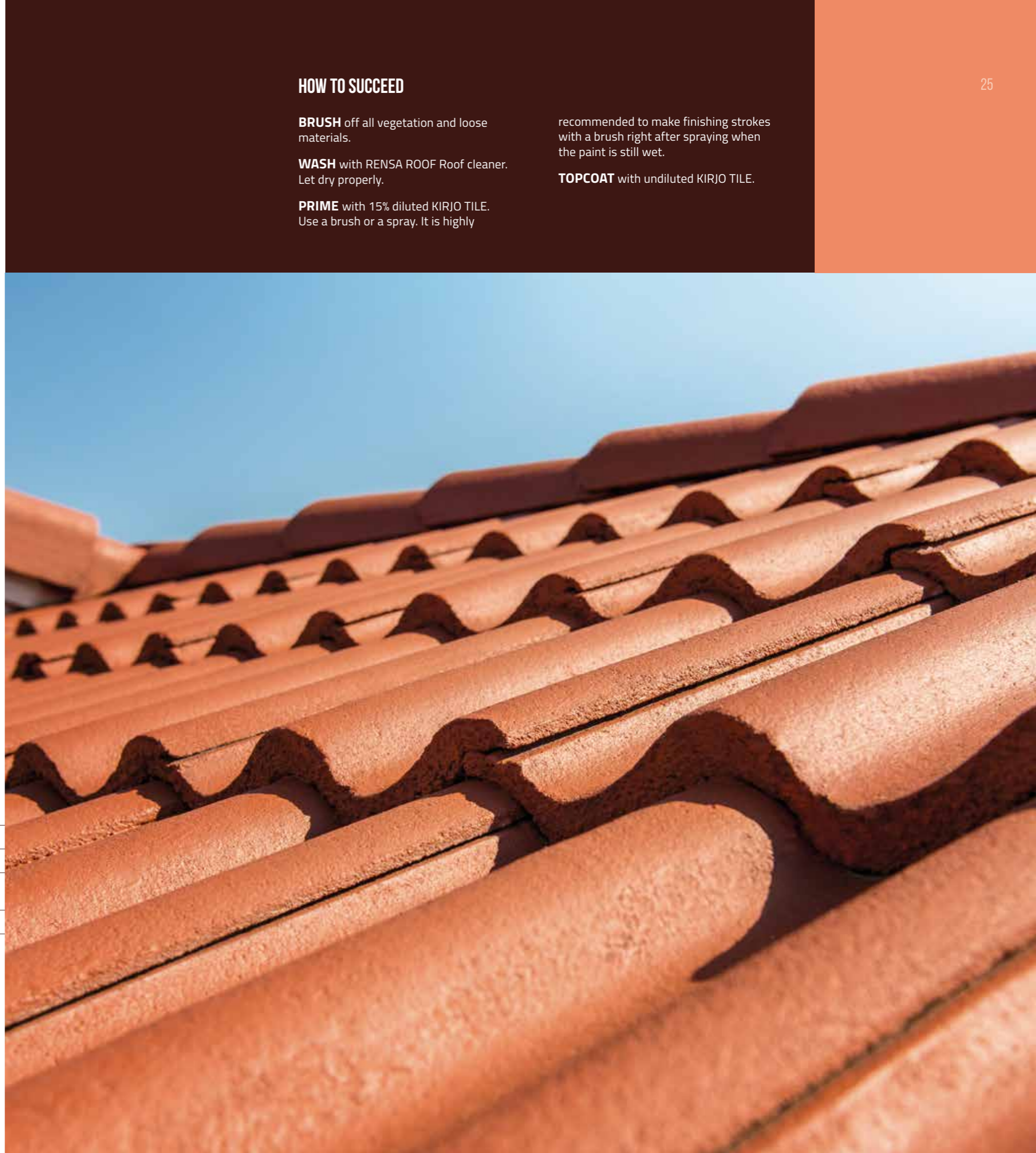
BRUSH off all vegetation and loose materials.

WASH with RENZA ROOF Roof cleaner. Let dry properly.

PRIME with 15% diluted KIRJO TILE. Use a brush or a spray. It is highly

recommended to make finishing strokes with a brush right after spraying when the paint is still wet.

TOPCOAT with undiluted KIRJO TILE.



AFTER PAINTING

WASH YOUR TOOLS in a separate container. The washing water should be recycled as hazardous waste. For an even cleaner result, use the biodegradable RENSA® BRUSH cleaning agent.

RECYCLE Recycle the leftover paint as hazardous waste or give the rest to a neighbour or friend. Recycle empty and dry cans according to their material.

TAKE AFTER PICTURES Take photos of your newly-painted project and share with us on social media @teknospaints

CLEAN regularly. Cleaner surfaces will last longer. Brush off dirt and dust from the painted surfaces and if necessary wash with diluted RENSA FACADE. Also check the condition of the paint film from time to time. Cracks in the paint film are a sign it is time for maintenance painting.



CONTACT US

27

Interested in learning more?
Go to www.teknos.com

**WE MAKE
THE WORLD
LAST
LONGER**